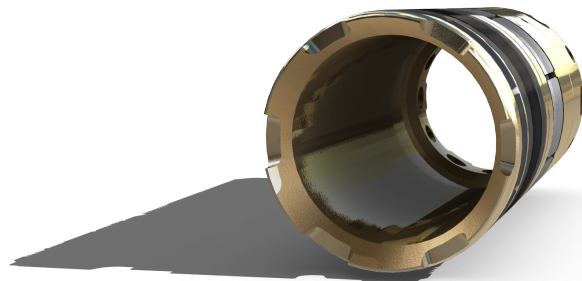
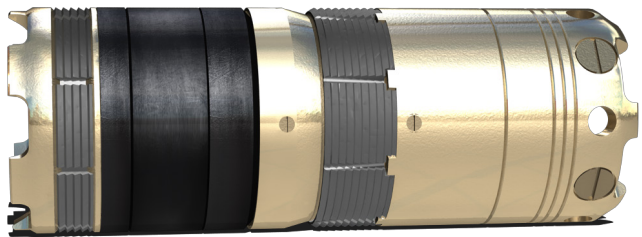


# SET-A-SEAT™

## PUMP-DOWN CASING BAFFLE



### QUIT MILLING, START PRODUCING

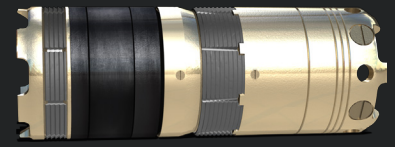


The Set-A-Seat™ tool is a revolutionary pump-down baffle that leaves the largest ID possible in the casing for optimum flowback. Like the conventional frac plug method, it is placed in the casing string using a conventional Baker or a Go Shorty Hydraulic Setting Tool on wireline. This patent-pending tool is the latest technology developed by Peak Completions.

The tool is used with Peak's proprietary line of Fantom™ dissolvable frac balls and eliminates the need to mill out after treatment. The Set-A-Seat™ allows a minimally restricted flowback of the reservoir and wellbore, as well as full 10,000 psi differential between stages.

The Set-A-Seat™ isolates the stage above it by using a large OD frac ball placed where the conventional composite plug would normally be. Once the ball is dissolved, the tapered front and back ends allow for conventional coiled tubing clean out tools to be run in and out of the tool without fear of hanging up or having to switch to slim hole BHA configurations.

The tool is made out of the same drillable, erosion-resistant material as our frac seats. This gives operators the opportunity to mill out if necessary since it is completely drillable and contains less than 45% of the material of a conventional composite plug - 10 lbs of iron, compared to 24 lbs of composite.



## PRODUCT HIGHLIGHTS

- Largest ID possible in casing for flowback
- Contains less than 45% material than composite plug
- Eliminates the need for mill outs after treatment
- Ability for full 10,000 psi bottom-hole differential pressure between stages
- Isolates the stage above with large OD dissolvable frac ball

## DESIGN FEATURES

- Compact design
- Tapered leading and trailing edges for coiled tubing clean out
  - Made out of drillable materials for easy mill out
- Utilizes a high bypass area
- Dual anti-preset design

## TECHNICAL SPECIFICATIONS

Product Number	Size	Weight Range	OD	ID	Burst	Collapse	Overall Length
2090-35A-A00	3 1/2"	9.3#	2.781 in	1.906 in	10,000 psi	9,200 psi	10.50 in
2090-45A-A00	4 1/2"	9.5#	3.813 in	2.938 in	10,000 psi	9,200 psi	10.50 in
2090-45B-A00	4 1/2"	10.5#	3.781 in	2.906 in	10,000 psi	9,200 psi	10.50 in
2090-45C-A00	4 1/2"	11.6#	3.750 in	2.875 in	10,000 psi	9,200 psi	10.50 in
2090-45D-A00	4 1/2"	13.5#	3.656 in	2.781 in	10,000 psi	9,200 psi	10.50 in
2090-45E-A00	4 1/2"	15.1#	3.563 in	2.688 in	10,000 psi	9,200 psi	10.50 in
2090-50A-A00	5 "	15#	4.125 in	3.250 in	10,000 psi	9,200 psi	10.50 in
2090-50B-A00	5 "	18#	4.000 in	3.125 in	10,000 psi	9,200 psi	10.50 in
2090-50C-A00	5 "	21.4#	3.875 in	3.000 in	10,000 psi	9,200 psi	10.50 in
2090-55A-A00	5 1/2"	15.5#	4.750 in	3.875 in	10,000 psi	9,200 psi	10.50 in
2090-55B-A00	5 1/2"	17#	4.625 in	3.750 in	10,000 psi	9,200 psi	10.50 in
2090-55C-A00	5 1/2"	20#	4.500 in	3.625 in	10,000 psi	9,200 psi	10.50 in
2090-55D-A00	5 1/2"	23#	4.375 in	3.500 in	10,000 psi	9,200 psi	10.50 in
2090-55E-A00	5 1/2"	26#	4.250 in	3.375 in	10,000 psi	9,200 psi	10.50 in