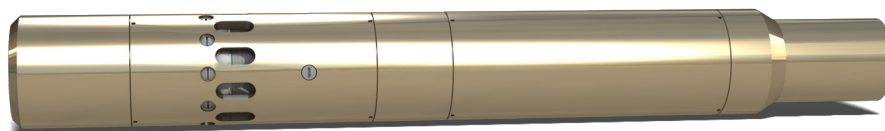




HIGHER STAGE COUNTS, EXTENDED LATERAL LENGTHS, AND IMPROVED PUMP RATES FOR OPENHOLE AND CEMENTED APPLICATIONS



The SuperPort™ is a ball actuated frac sleeve offering a reduction in ball seat increments. The added seat and ball sizes allow operators to either increase their stage count or to run the same number of stages at a larger ball seat ID. The advanced seats are precision engineered to provide high reliability and allow for more economical ball materials to be used.

The SuperPort™ comes with a standard 10,000 psi differential rating, while the HPHT version is capable of withstanding differential pressures of 15,000 psi. The SuperPort™ can be designed for several different applications, including both openhole and cemented multistage completions. In openhole applications, Peak offers several mechanical and swellable packer options. In cemented applications, the first stage is initiated with precision burst disk technology, resulting in a completely rigless system.

The SuperPort™ allows a continuous pumping operation for the stimulation treatment, eliminating downtime between stages. A 30-stage system can save the operator up to 12 days of completion time compared to the plug-and-perf method. In addition, the system provides a significant reduction in water requirements, equipment on location, and operational risks.

Peak designed the SuperPort™ as a flexible solution for several unconventional plays, such as the Bakken, Bonesprings, Cline, Eagle Ford, and Utica. The system offers maximized stimulated reservoir volume through increased stage counts and pump rates while minimizing the cost and time, resulting in efficient, effective completions.



PRODUCT HIGHLIGHTS

- Maximize efficiency of multistage fracture stimulation
- Increase stage counts and lateral lengths
- Improve pump rates
- Reduce horsepower and water needs
- Guarantee flexibility at wellsite with compact tool design
- Proven, reliable operations with advanced ball seat design
- Available for cemented and openhole applications

DESIGN FEATURES

- Standard 10k psi / 350°F rating – HPHT adaptable
 - Precision engineered ball seats
- Internal triple-lock, anti-spin mechanism ensures that the sleeve will not rotate or spin during open or closed mill out
 - LTC, BTC, and premium thread options available

QUICK TECH DATA

TEMPERATURE RATING	STANDARD PRESSURE RATING		STANDARD CASING SIZES		MAX STAGES	
	psi	MPa	in	mm	OPENHOLE	CEMENTED
HPHT Adaptable	10,000	69	4.5	114.3	46	28
			5.5	139.7	62	31

NOTE: ADDITIONAL SIZES AND HPHT VERSIONS AVAILABLE